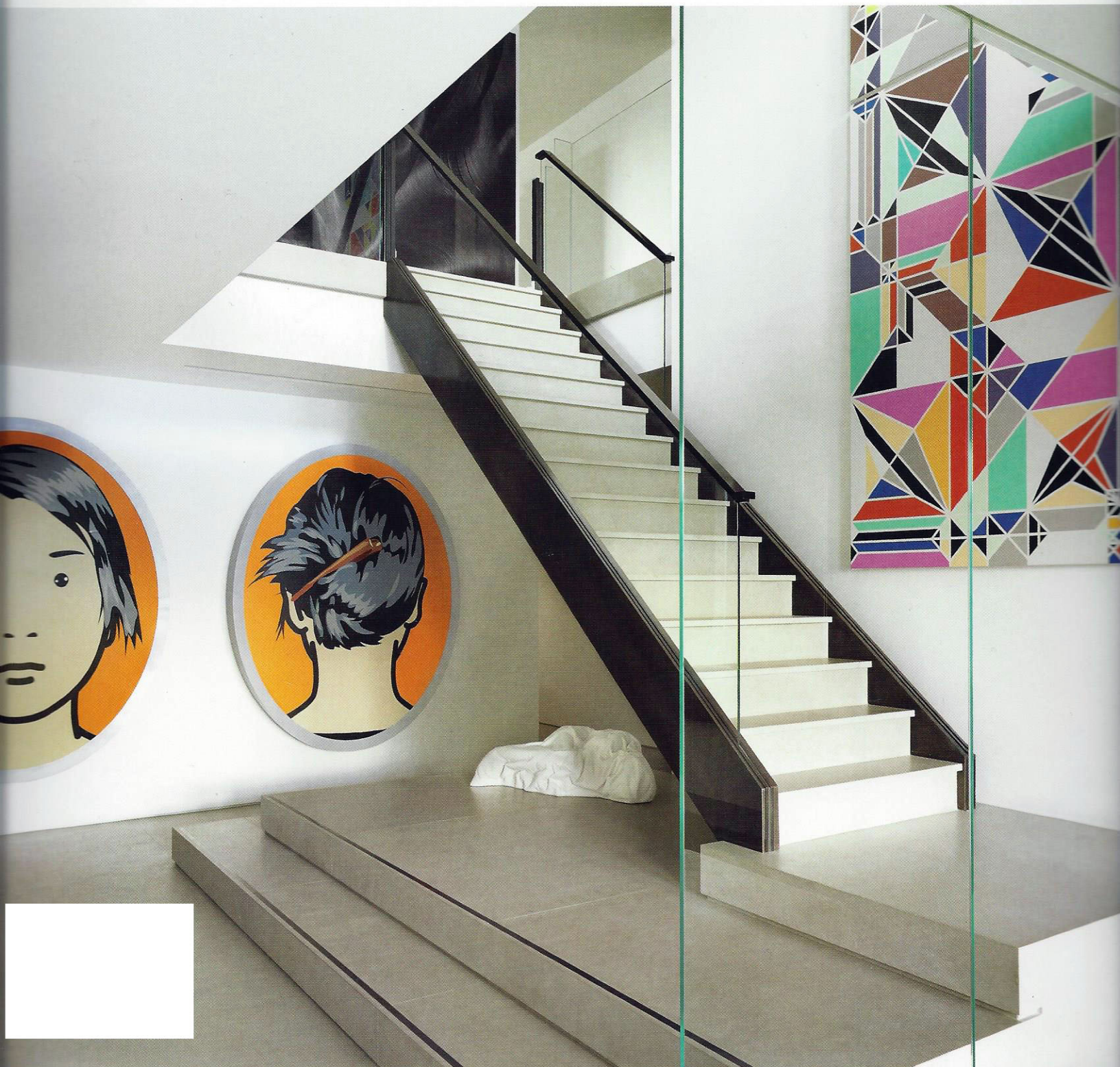


NEW YORK

# luxe.

interiors + design®





Oversize hammered bronze pulls, which required more than one trip to the foundry, accent custom rosewood cabinetry. The Calacatta marble bar features a slim bronze base, tapered legs and Bernhardt stools covered in Keleen leather. The pendants are vintage Murano glass from John Salibello.

When the master suite was expanded to renovate the dressing rooms and baths, the conservatory was born. Enclosed in windows, its job is to shine, which it does thanks to a custom silk and wool rug by Tai Ping and a vintage sphere light from John Salibello.





In the study, Beckstedt employed his clients' favorite colors, pairing chocolate paneling and cabinetry with lacquered blue shelving and a reflective blue ceiling. The rosewood and nickel desk is by John Rosselli. *Opposite:* Beckstedt rummaged through cartons of family photos in the attic in order to create a statement-making memory wall in the hallway.